

# Assembly Instructions DUKTA Flexible Panels

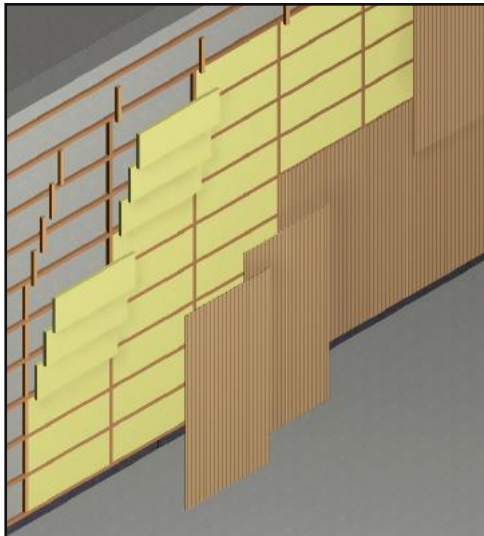


# Assembly Instructions

## DUKTA Flexible Panels

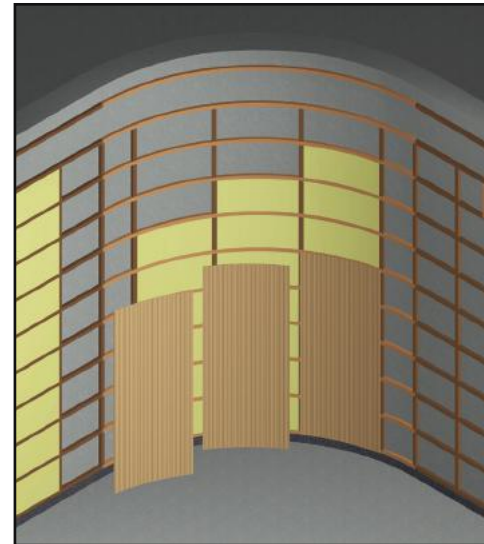
### Pre-installation Conditions

Before starting the assembly, check that the conditions necessary for installation are met at the site (consult the conditions for TRANSPORT, STORAGE, INSTALLATION, and MAINTENANCE published on our website). To achieve the highest coefficient of sound absorption, create a space behind the panels, generally 200mm for false ceilings and 40mm for wall coverings, and place ISOVER ARENA APTA BASIC fiber with a density of 21 kg/m<sup>3</sup> and a thickness of 48mm or equivalent supported on the back of the panel.



#### Assembly on Flat Surface

Create a well-leveled batten framework on the wall or ceiling to be covered, with a maximum distance of 400mm between battens. Place 45mm ISOVER ARENA BASIC fiber between the battens. Cover with an acoustic veil attached to the battens or the back of the panels with adhesive. Fix the panels on this batten base using adhesive and needles.



#### Curved Assembly

Create a wooden structure on the wall or ceiling, with the desired curves, observing the minimum curvature for each model. Maximum distance between supports is 400mm. Place 45mm ISOVER ARENA BASIC fiber between the battens. Cover with an acoustic veil attached to the battens or the back of the panels with adhesive. Fix the panels on this batten base using adhesive and needles.

**Important:** Most models can be installed on both walls and ceilings, except for thicker models like JANUS, which due to their weight and flexibility are not recommended for ceiling installation.



# Assembly Instructions

## DUKTA Flexible Panels

### Handling of Panels

- The panels are always delivered oversized, with a rigid frame around them to facilitate transport and handling. This frame has notches that facilitate the cutting position to achieve continuity of the panels and maximize their use. The technical sheets for each size and material indicate the dimensions of the raw panel and with the cut for maximum utilization. The cut must be made with a wood circular saw, adjusting the type of saw, depth, and feed to avoid splintering. Perform necessary tests before cutting the panels.
- The panels can be delivered natural (unfinished), lacquered, or varnished.
- If working with unfinished panels and wishing to apply the finish after installation, it is recommended to use thin waxes and stains for easier application on these types of panels.
- The handling, machining, and installation of the panels should be carried out with great care by experienced specialists in wood installations.





# Assembly Instructions

## DUKTA Flexible Panels

### Handling of Panels 2

- Once cut, the panels are very flexible in the direction perpendicular to the cuts. The technical sheets for each model and material indicate the minimum recommended bending radius. This radius is approximate and must be confirmed before carrying out the work.
- The curvature of the panels is provided by the supporting substructure that must be installed behind them. The panels are NOT self-supporting. They are a covering material.
- The panels are cut using a circular carpenter saw suitable for the type of work to be done.
- The panels are glued and nailed with 0.6mm needles onto the supporting structure.

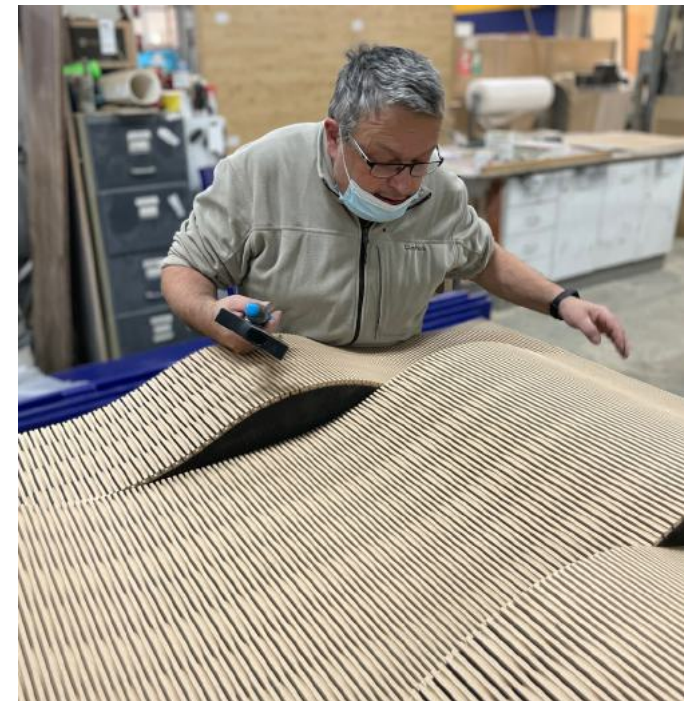




# Assembly Instructions DUKTA Flexible Panels

## Handling of Panels 3

- The panels are glued and nailed with 0.6mm needles onto the supporting structure.
- To achieve greater sound absorption, it is recommended to put 45mm ISOVER ARENA BASIC rock wool or equivalent in the space behind the panels.



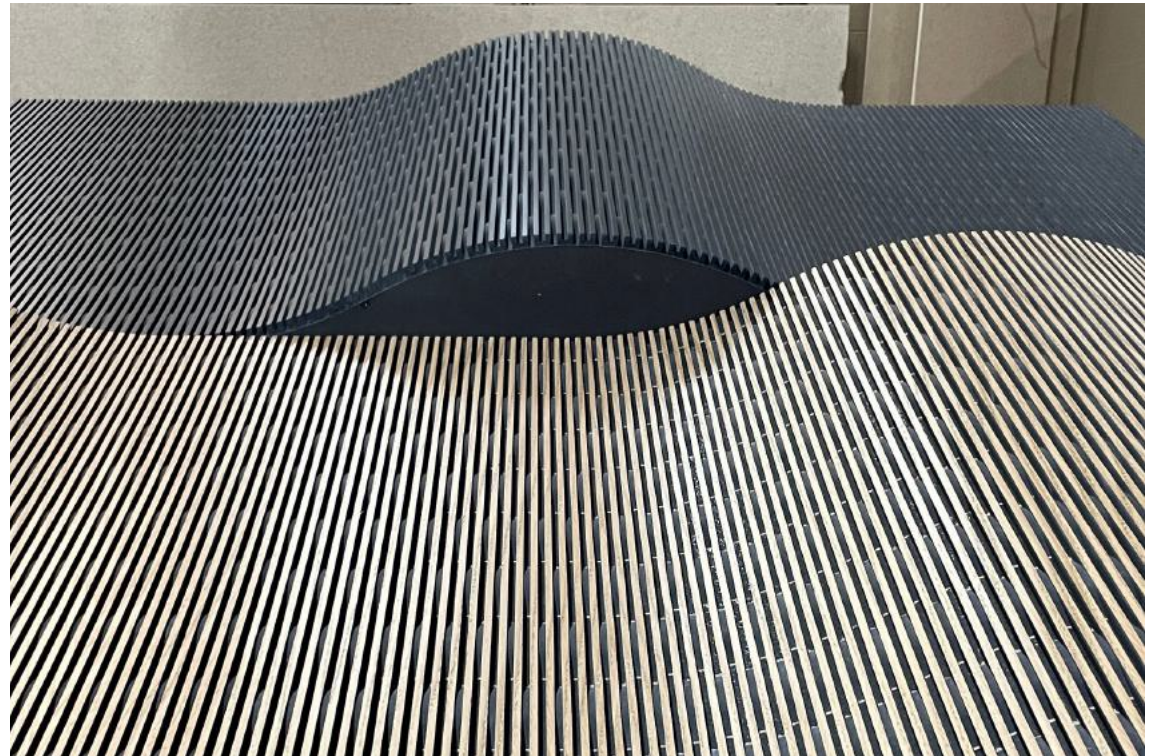


# Assembly Instructions

## DUKTA Flexible Panels

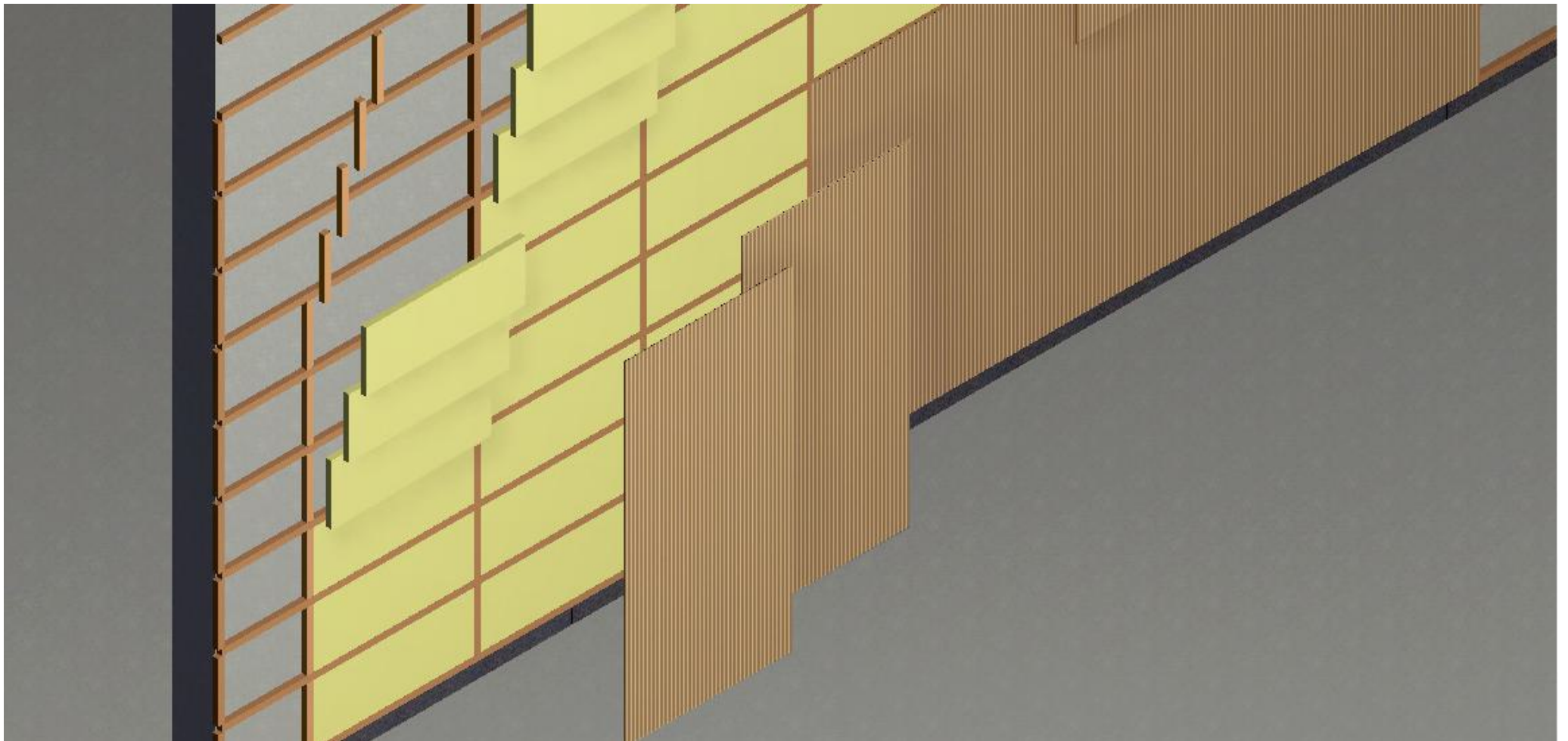
### Handling of Panels 4

- To achieve greater sound absorption, it is recommended to put 45mm ISOVER ARENA BASIC rock wool or equivalent in the space behind the panels.
- A light fabric sheet (acoustic veil) should be installed between the panels and the structure to hide the mineral wool and structure that would be visible through the perforations of the panels.
- For most models, the acoustic veil can be requested separately or already adhered to the back of the panels. It is also possible to request the panels with the finish already applied (varnish, lacquer, ...).



## Assembly on Flat Surface

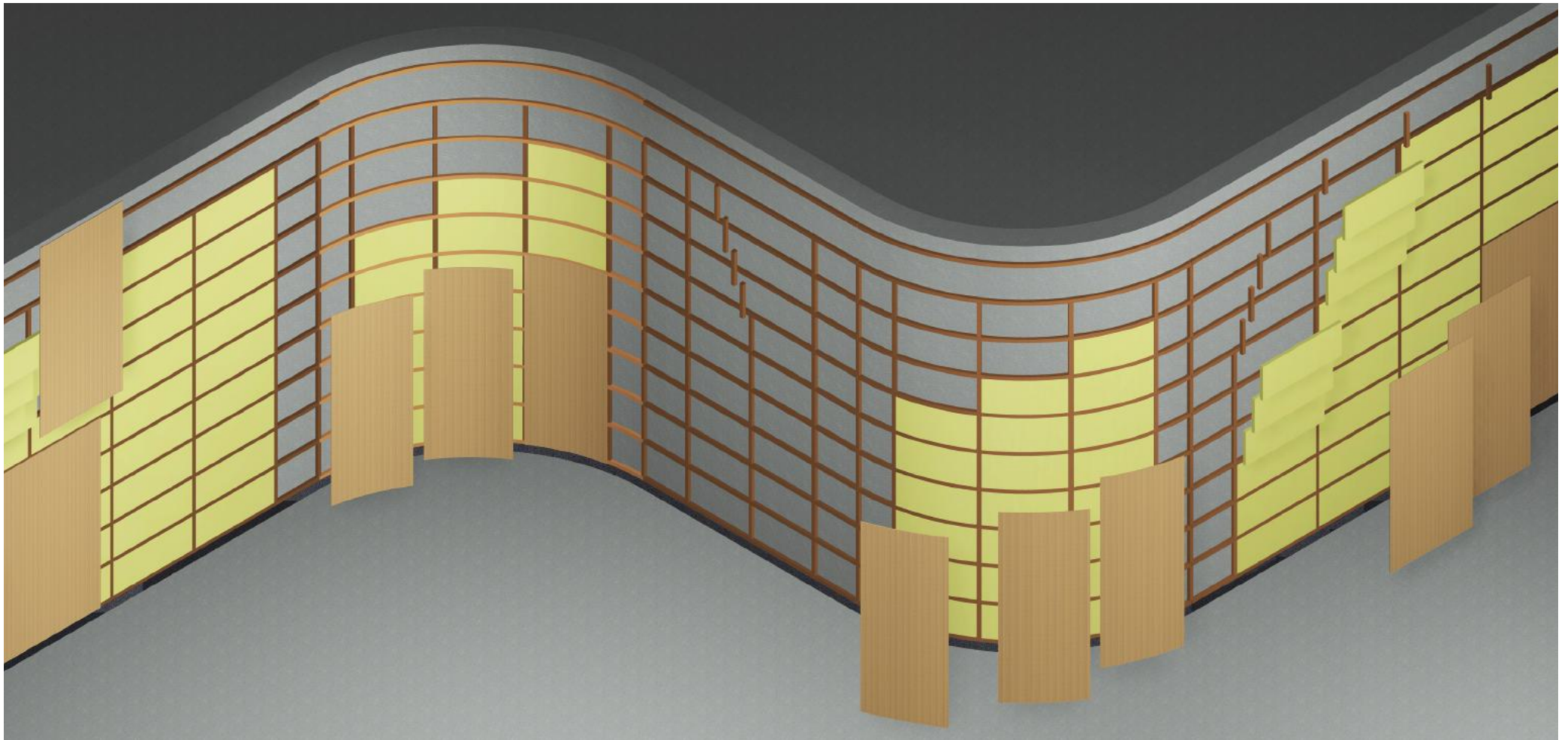
- To mount on a flat surface, a substructure consisting of wooden battens should be installed. We recommend horizontally installed MDF battens of 40x45mm at a distance no greater than 400mm. Install segments of the same profile between the battens, aligning with the joints of the panels.
- For maximum sound absorption, it is recommended to install 45mm ISOVER ARENA BASIC rock wool or equivalent between the battens, behind the panels.
- The battens must be securely fastened to the wall and well-leveled. Avoid direct contact of the panels with the floor and protect the lower part using a baseboard.





## Curved Assembly

- If you want to install on curved surfaces, it is necessary to create a firm and stable batten framework on the back, and then apply the panels on the framework using adhesive and a nail gun.
- The rest of the recommendations are the same as for the installation on a flat surface.





## Curved Assembly

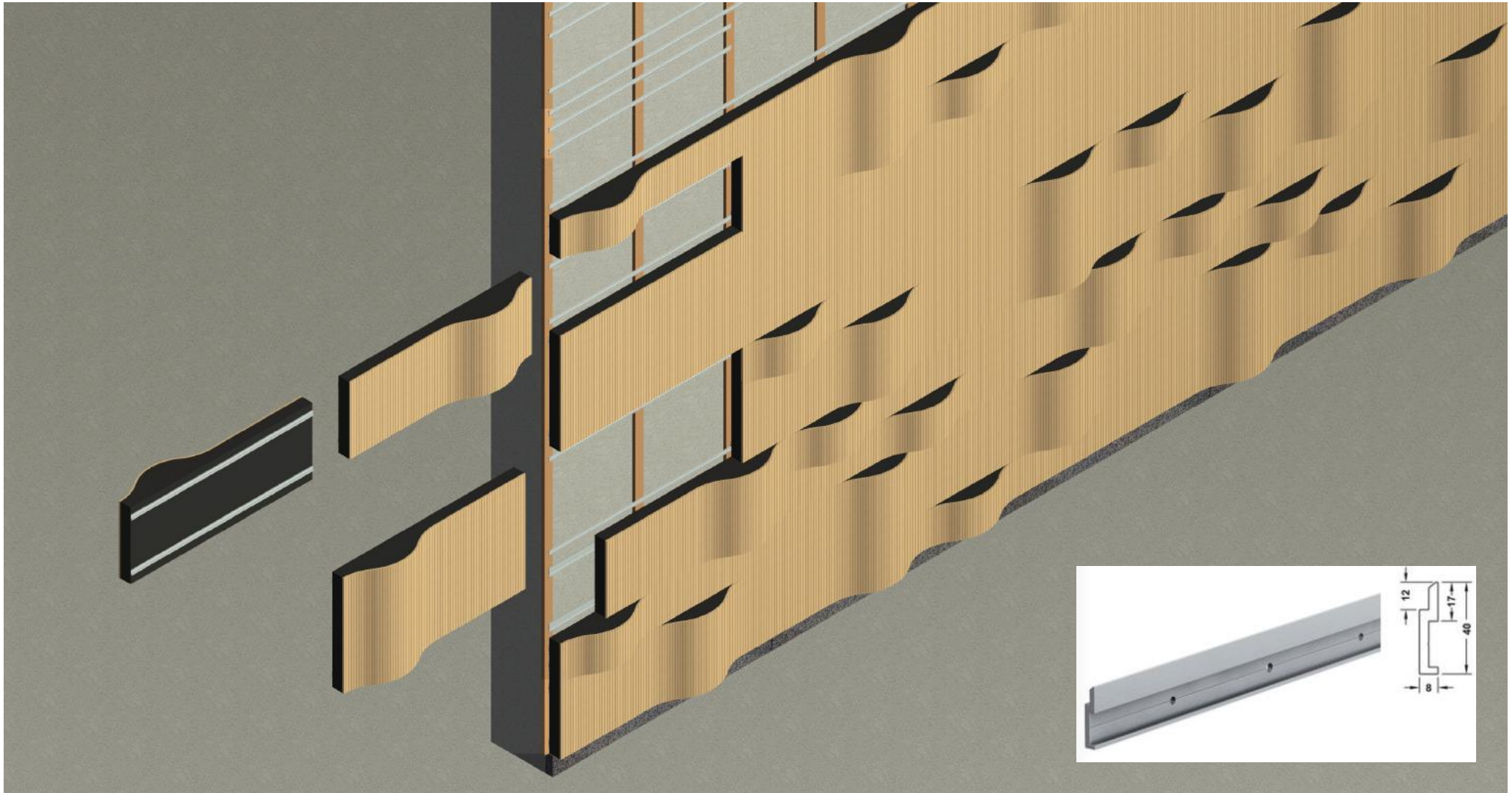
- Example of assembly on a wall using battens.





## Assembly with Pre-assembled Boxes

- For certain assemblies and designs, it may be preferable to create boxes or supporting structures with the shapes and panels already installed and finished. In this case, the structures are mounted on the wall using different fixing systems, such as the Hafele HELIOX backpack system or equivalent.





## Assembly with Pre-assembled Boxes

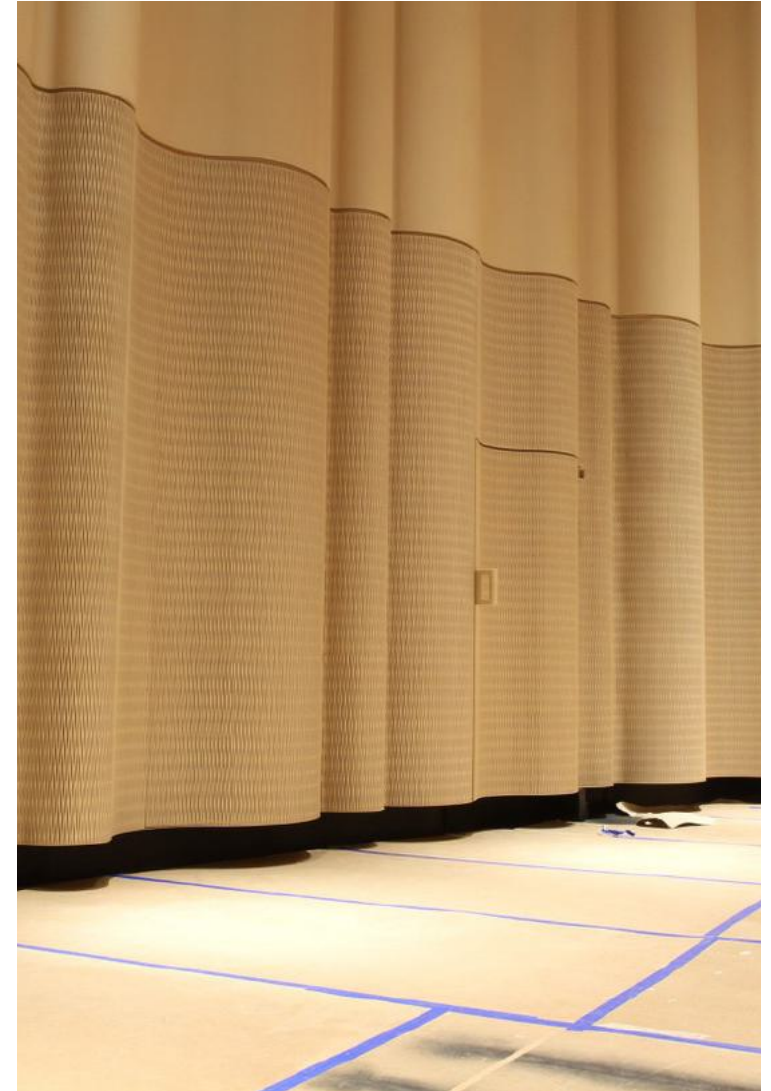
- Example of assembly using prefabricated boxes.





## Assembly with Pre-assembled Boxes

- Example of assembly using large prefabricated self-supporting structures.

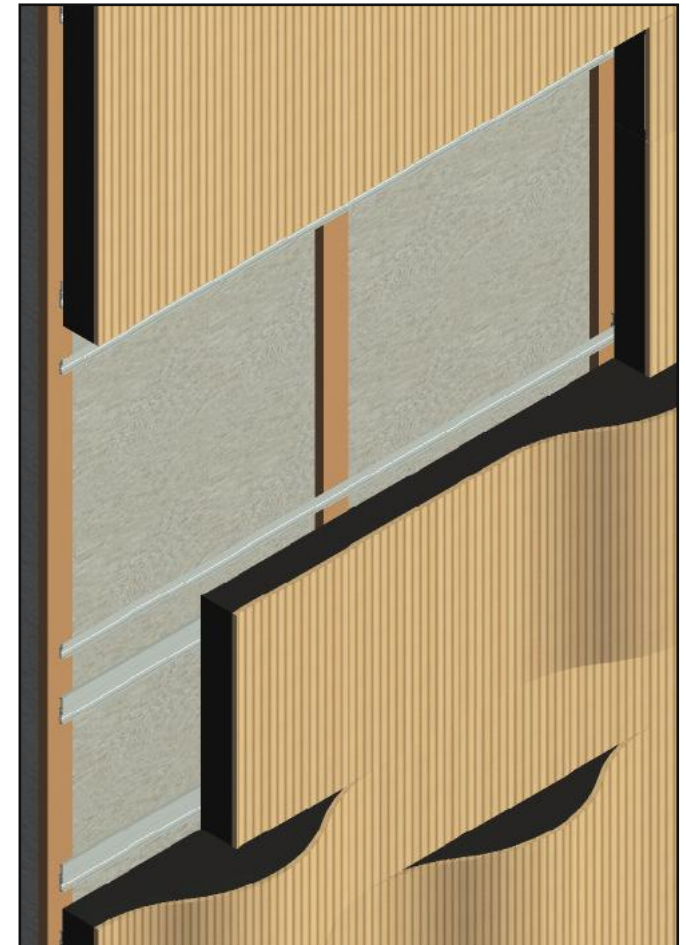
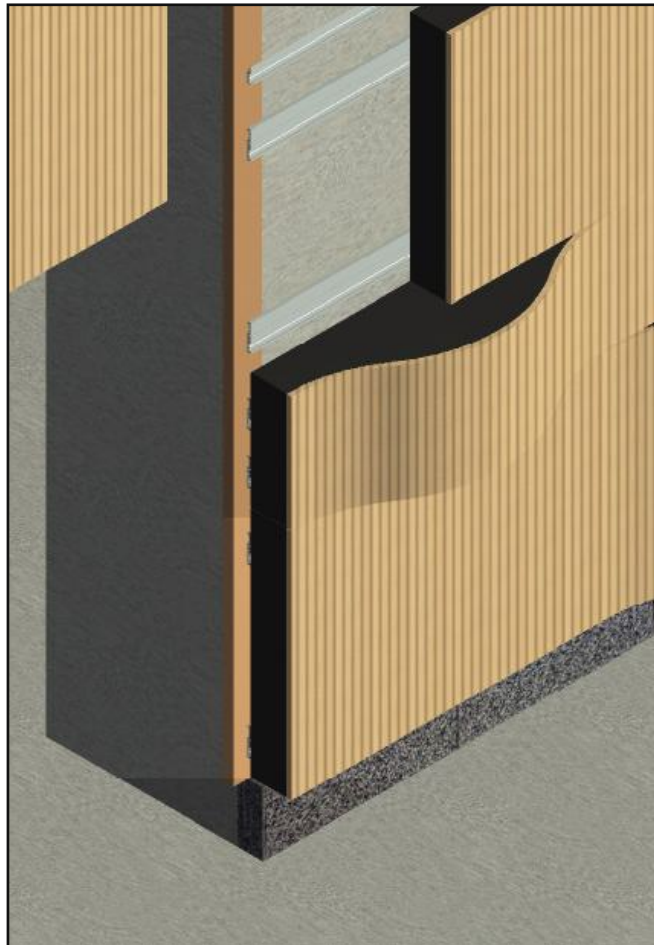
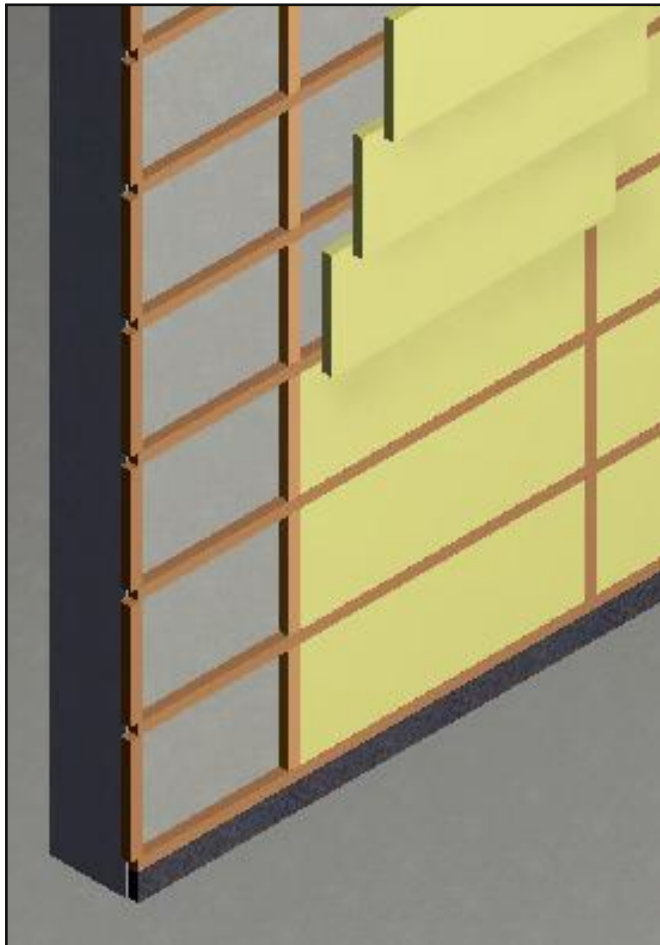


## Other general recommendations

The battens must be perfectly level and securely attached to the wall. The walls should not have any dampness.

Wooden panels should never be placed directly on the floor to avoid moisture problems. Protect the baseboards with skirting boards or other elements.

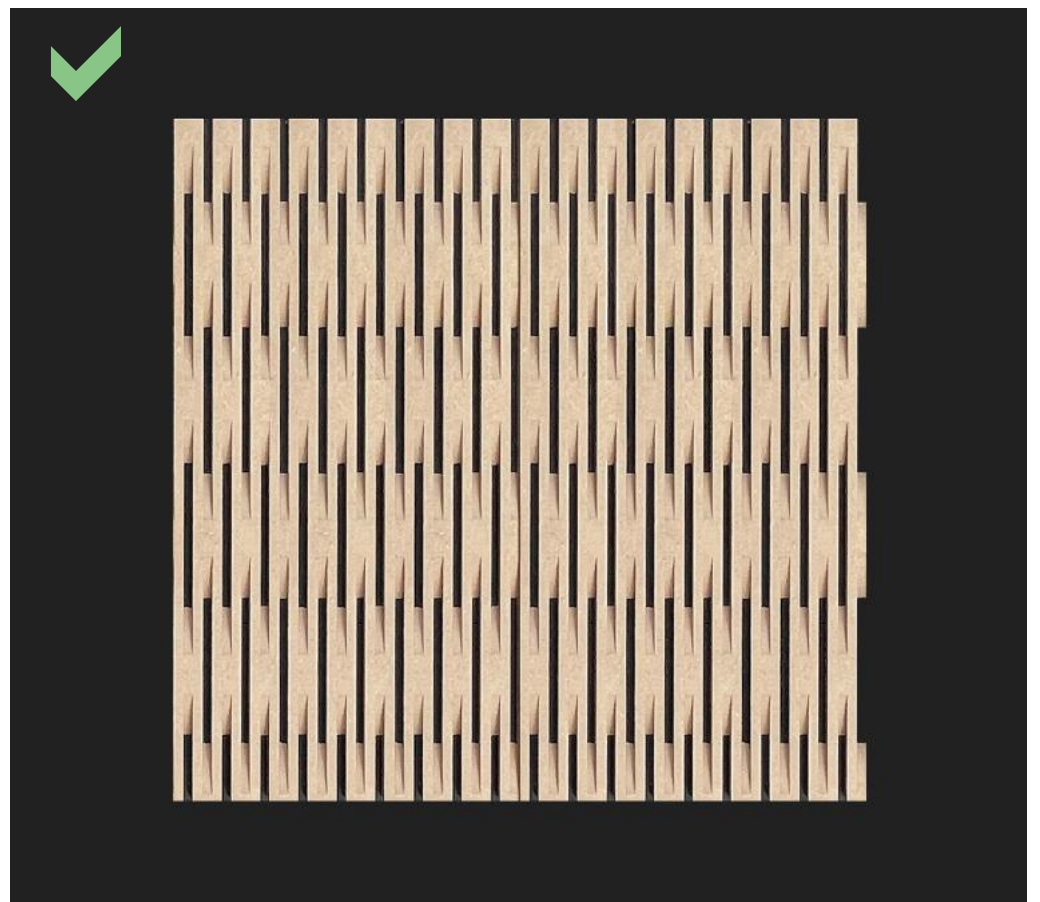
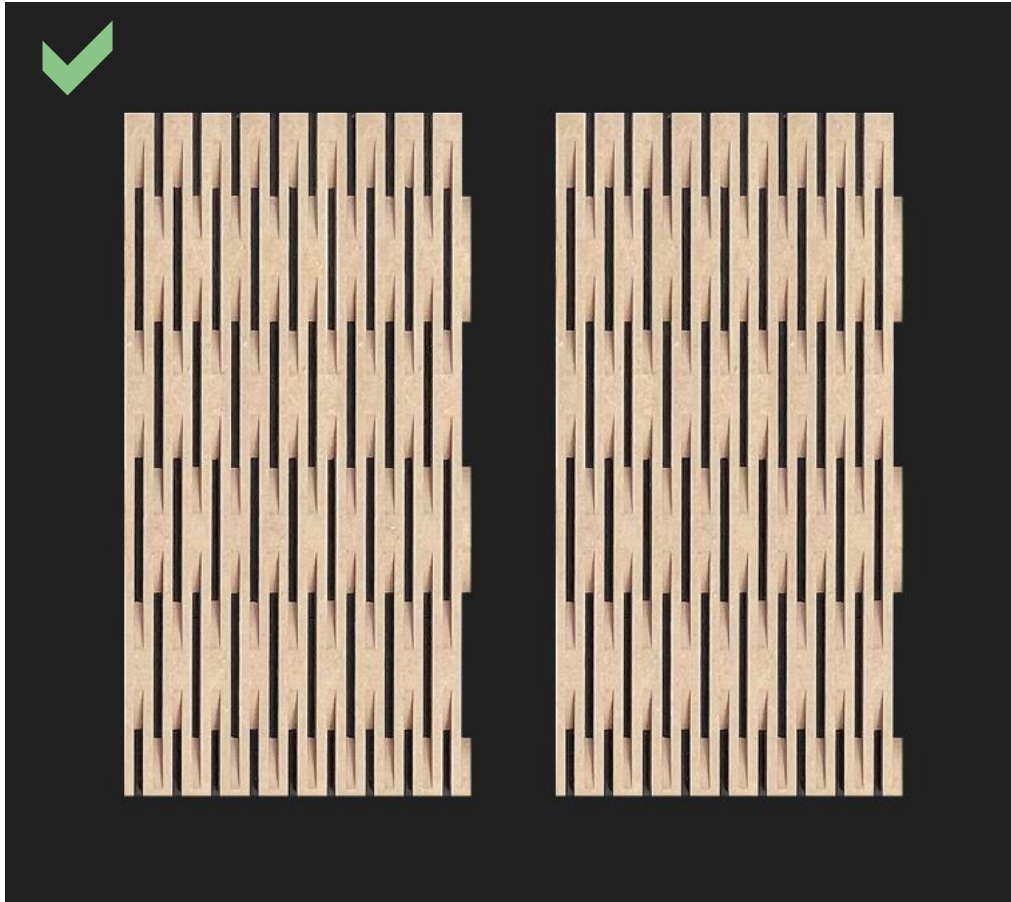
There are different types of hardware available to adapt to various mounting systems.





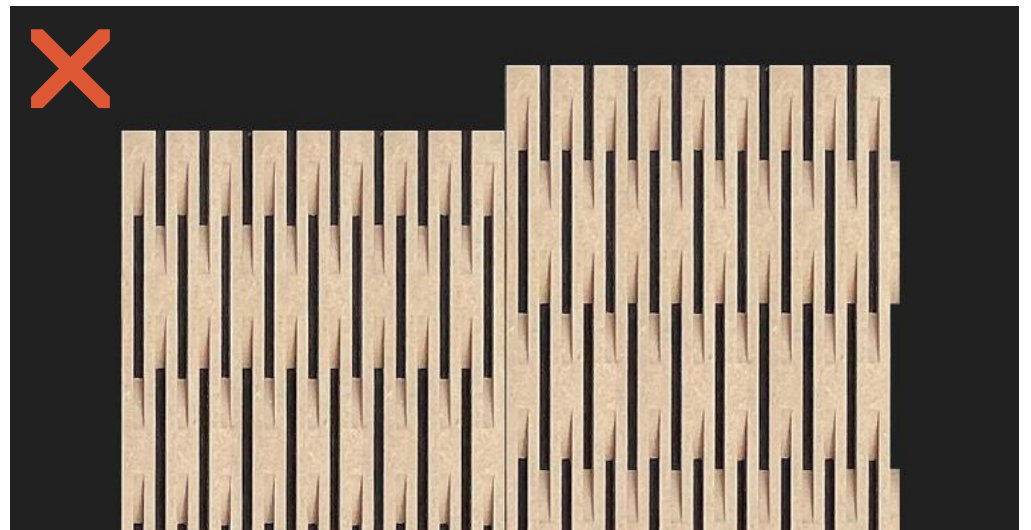
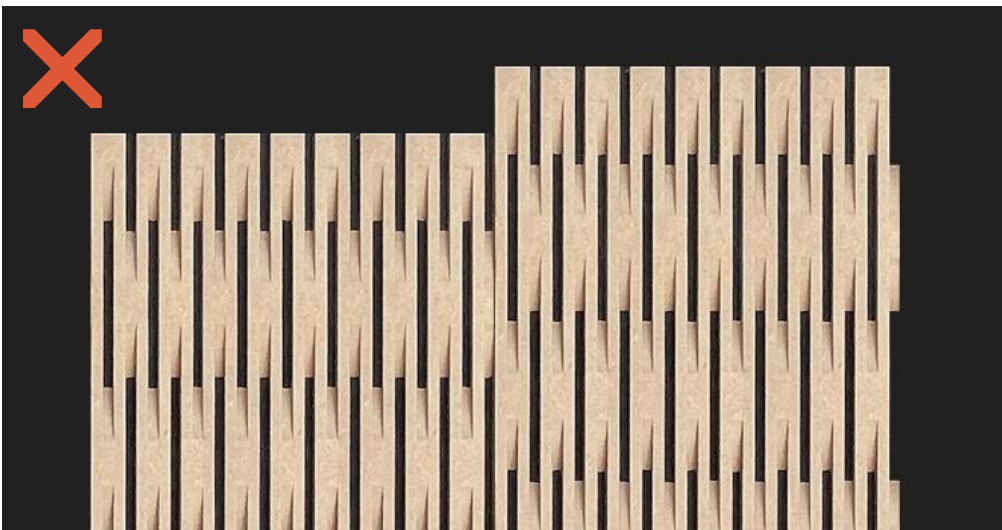
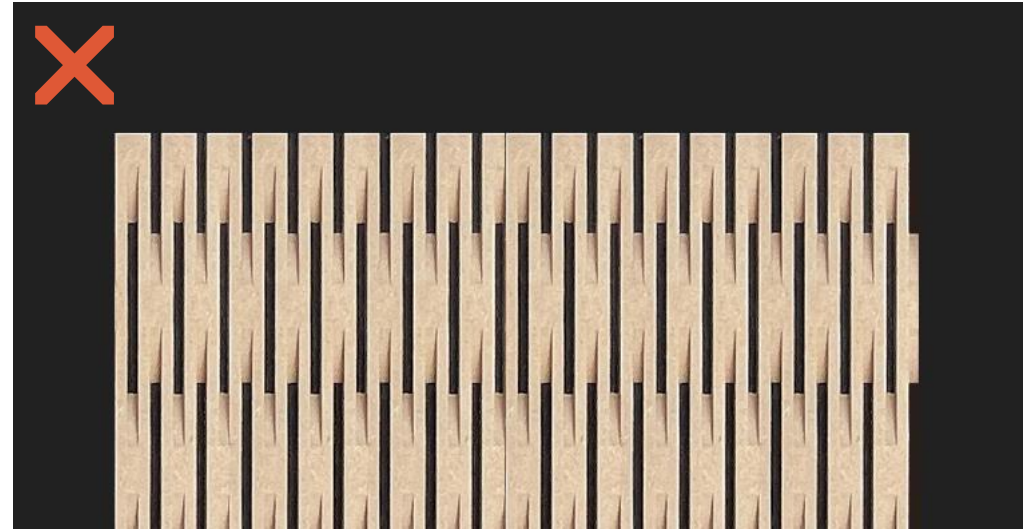
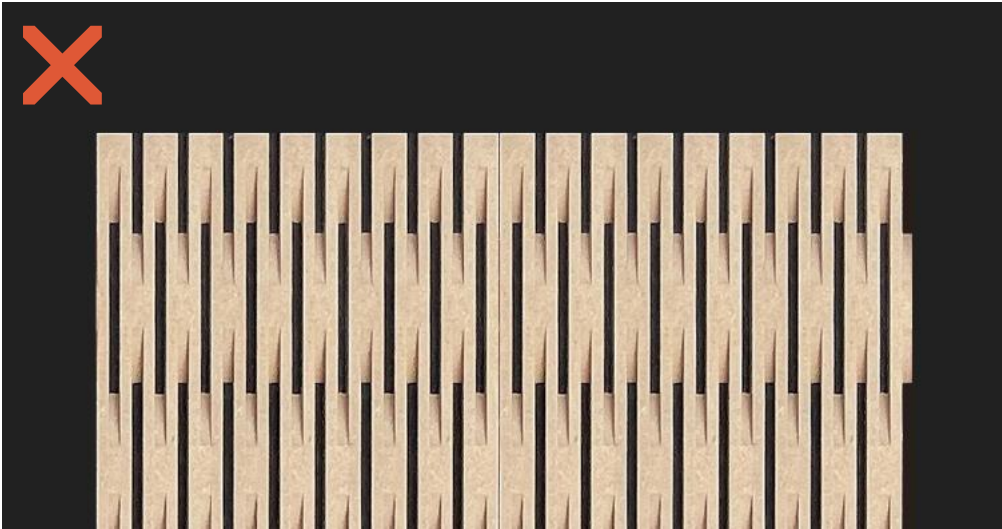
# Panel Cutting and Modulation

- Each DUKTA model has a repetitive grooving pattern throughout the panel. If the cuts and joints are made properly, the joints are practically invisible.
- Before making cuts, make sure they are made at the appropriate location with respect to the proper modulation.
- The images below reflect a properly made cut and joint.



## Panel Cutting and Modulation

- The following examples show improperly made cuts and joints.





# Important

**For the correct installation of our products you must follow these assembly instructions, in addition to accomplishing with the transport, storage, installation and maintenance conditions published on our website.**

The images in this manual are only illustrative of the different installation concepts and recommendations; therefore the dimensions, scales and proportions shown may vary for a better understanding of the installation systems proposed. Illustrations have been completed with accessories not included.

Due to the high customization of our products, the information described in this documentation may vary.

The company is not responsible for eventual errors in writing, printing, technical data and translations.

Possible updates of this document available at [www.decustik.com](http://www.decustik.com).

This installation recommendations must be corroborated and adapted in each case by the technical management of each project.

Copyright © 2023 Decustik

This document is the sole property of DECUSTIK - Mecanitzats de la fusta Kim, s.l. and may not be copied, reproduced or published, even partially, without prior written authorization. Decustik is a registered trademark of Mecanitzats de la fusta Kim, s.l.

## **ASSEMBLY INSTRUCTIONS DUKTA SYSTEM REV 7/2023 | EN**



**Pol. Ind. Mas les Vinyes**  
C/ Llevant, 2  
08570 Torelló (Barcelona)  
T (+34) 93 859 08 38  
**comercial@decustik.com**  
**www.decustik.com**